

Looking for an investment? Build in the future!



Residential Property Address: 812 E 10th St. Nebraska St., Wayne, NE PRICE: \$80,000

Legal Description: Lot 4, Lot 21 Exc E 23.26', Lot 22 Exc E 23.26' of S 78.19' Angel Acres Addition, Wayne, NE.

Schools: Wayne Community Schools **Annual Taxes:** \$2,382.10

Possession Date: Negotiable

Year Built: 1920 **Lot size:** 1 Acre

Property Description: 3 bedroom, 1 bath home on a huge lot! New kitchen flooring and carpet in Living Room. This could easily be remodeled to be a 4 bedroom home.

Enjoy the pretty lot located just across the street from the park.

Call Wendy today to set up your tour.



Property Details

Siding: Cement board
Roof: Composite Shingles
Heating: Gas Forced Air
Cooling: Window Air
Water Heater: 40 gal.
Utility: Fuses

Interior Features

Main Level	1089 sq. ft.
Second Floor	700 sq. ft.
Total sq. ft.	1,789 sq. ft.

Huge Lot!

Use as investment or build in the future

Main Floor

Kitchen: 13' x 17'
Dining Room: 10' x 17'
Living Room: 17' x 17'
Bedroom #1: 10' 4" x 13' 10"
Bath: 6' 8" x 6' 10"

Second Floor

Bonus Room: 11' 6" x 17' 4"
Bedroom #2: 13' x 14'
Bedroom #3: 13' 4" x 17' 6"

Basement

Unfinished

(All dimensions are approximate.)

The information contained within this data sheet, although believed to be accurate, is not warranted.



206 Main St. Wayne, NE.

visit us at: www.midwestlandco.com

Office: 402-375-3385

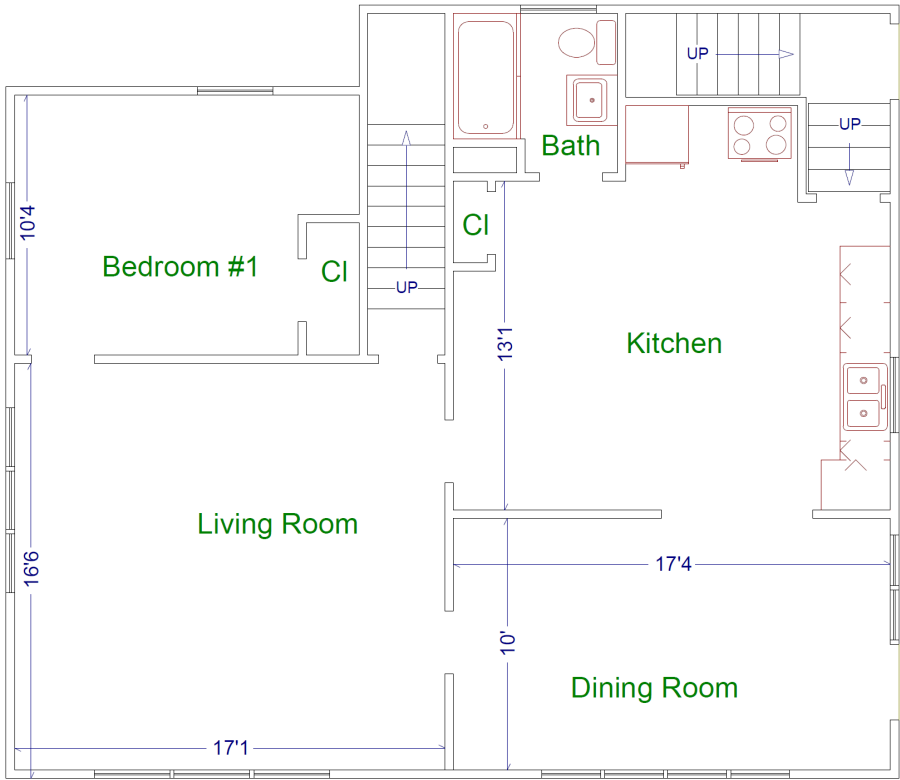
Cell: 402-369-2647

Email: wendy@mwlc.com



Wendy Vawser
Residential Sales

Main Floor



Upper Floor

